

**20
26**

KILBURN NETBALL CLUB

**MEMBERS
HANDBOOK**



total eyecare

Proud partner of Kilburn Netball Club

Kilburn Netball Club acknowledges the traditional owners of the Land upon which we play, and pay our respects to Elders past and present.



TABLE OF CONTENTS

Our History

Life Members

Our Mission

Management Committee

Uniform

Umpiring

Training & Matches

Partnerships

1Fundraising

1Member Wellbeing Officers

Code of Conduct

Grievance Procedure

Important dates

Coach List

OUR HISTORY

The late Ruth McPhee founded Kilburn Netball Club in 1970, and we proudly acknowledged our 50th anniversary in 2020. In the early 70s teams were made up of players from Collegiate Old Scholars. Our name comes from Kilburn House which housed the Collegiate Sisters at Collegiate School.

The foundations of the club were successfully built on an ethos of honesty, loyalty and commitment. This ethos was quickly adopted and has been carried through to players and officials today.

Kilburn has a strong sense of history with many long-serving members including 39 life members, several of whom hold similar honours with STNA and are still a part of Kilburn today!



OUR HISTORY

The club has been one of the dominant forces in the STNA over 50 years fielding teams in the Tasmanian Netball League right through to under 9s. Player numbers have increased over the years from the initial six teams through to the current season where we have a record 41 teams that will compete in the 2026 STNA Winter Roster. Currently, Kilburn has a membership of close to 400 members!

Throughout the years there have been several changes in the style of playing uniforms, but Kilburn's club colours have always been royal and sky blue.



LIFE MEMBERS

Life membership is given to people who have been members of and contributing to the Kilburn Netball Club for 15 years.

Life members are not required to pay any club membership fee and are presented with a badge in honour of their service and commitment to the club at the end of season dinner and trophy presentation.

Kilburn currently has 44 life members, with new members appointed each year!

LIFE MEMBERS

Our life members are:

Ruth McPhee

Pam Cromer

Marjorie Bowden

Jenny Geappen

Di Palmer

Helen Adams

Sheree Nichols

Tracy Burn

Sally Bowden

Deb Jeffrey

Cheryl Sutton

Shelley Neale (Gay)

Jodie Clifford

Vanessa Eyre (Gordon)

Amanda Sartori (Foale)

Stephanie Cooper

Terry Dando

Andrea Gellie

Vanessa Adams

Melissa Loring (Direen)

Melinda Williams (Whelan)

Anita Hill

Laura Winch (Mitchell)

Emma Mitchell

Lynnie Wright

Sandra Harris

Jess Phillips

Daele Cornish (Lethbridge)

Emily Harris

Lucy McConnell (Dennis)

Jill Franks

Leah Garlick

Laura Johns (Paton)

Sharon Salter

Jessie Browning (Mason)

Kellie Williams

James Adams

Jessey Dillon

Sandra Hniat

Nicole Lansky

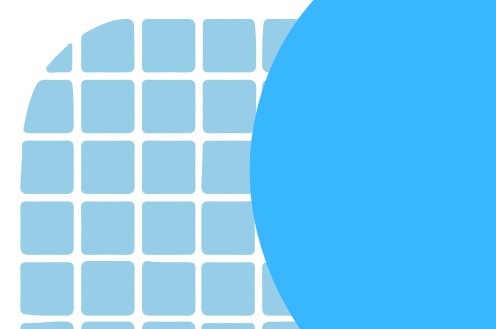
Jane Rogers

Lucy Miles

Bec Iles

Catherine Morgan

Daele Cornish



OUR MISSION

To provide an inclusive environment for members to participate, develop and gain enjoyment from the game of netball!

COMMITMENT

Kilburn Netball Club asks its members to:

- Display good sportsmanship
- Be respectful of all volunteers, umpires, coaches and players
- Attend all training sessions and ensure availability for all rostered matches
- Try your best at training and in matches
- Keep coaches informed of any illnesses or injury that may impact your ability to attend trainings and games
- Be prepared to volunteer for roles to help with the running of the club and competition
- Pay club fees and uniform invoices on time
- Participate in fundraising and social activities organised by the club
- Have fun!

MANAGEMENT COMMITTEE

The management committee is elected every 12 months at our Annual General Meeting, which is held in late October. The management Committee is responsible for all aspects of running the club including organising finances, team selections, coaches, uniforms, equipment, social activities and fundraising, just to name a few.

We are always willing to answer any questions you might have and welcome any offers of assistance. Please contact kilburnnetballclub@gmail.com if you want to get involved!



YOUR 2026 COMMITTEE

Executive committee

President: Rani Milne

Vice president: Melinda Williams

Secretary: Kristy Scott

Treasurer: Andrea Gellie

General committee

Sandy Hniat

Laura Winch

Michelle Smith

Gretel Roberts

Amanda Robertson

Hannah Robertson

Jemima Milne

James Adams

UNIFORM

COMPULSORY UNIFORM

All players are to wear the club uniform when participating in games.

The Kilburn uniform consists of:

- Royal blue A-line dress
- Hot pants or boy-leg shorts

OR

- Royal blue shorts
- Playing top

OPTIONAL UNIFORM

Other optional uniform items are available for purchase. These include:

- hoodies
- warm up tops, long sleeve tops
- beanies
- socks

Secondhand uniforms are occasionally available through our uniform Facebook page.

Any uniform queries or orders should be directed to Amanda at amandaleerobertson@gmail.com.

UMPIRE UNIFORMS

Umpires are required to wear full whites if badged and a white top and black bottoms if unbadged.

Please do not wear playing uniform under shirts!



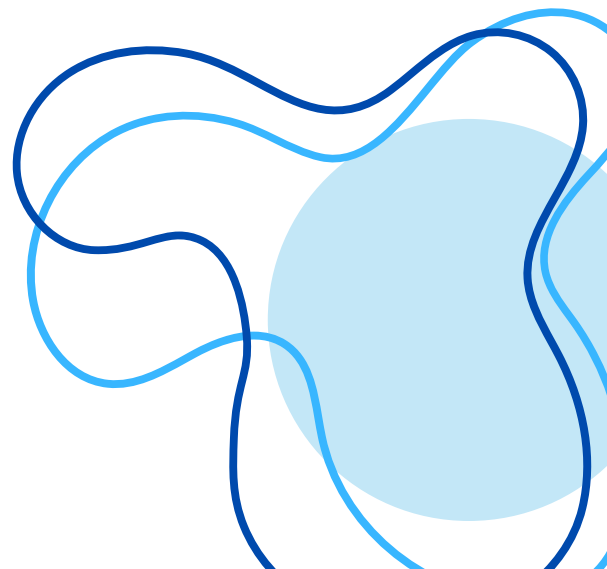
UMPIRING

One of the key aspects of playing netball at STNA is having enthusiastic and energetic umpires officiating our games.

Kilburn is proud to be running an Umpiring Program to help in the development of our umpires and ensure we are able to meet our commitments of supplying umpires each week.

Our program is open to all interested parties (young and old)! We ask that you have gained experience before they take the court during the winter roster, whether on the court or observing from the sidelines (this is to introduce you to the rules and their interpretations).

If you are interested in umpiring in 2026 or just want to learn more about umpiring, please contact us via email or have a chat with our umpire co-ordination team: Mel Clow and James Adams.



TRAINING

Attending training is a crucial part of being a team member, and is extremely important to help you develop as a player.

Your attendance at training is compulsory and your coach must be informed if you cannot attend your training session. If your coach feels this is a reaching unacceptable standards, court time may be affected.

Your coach will be in contact with you if your training is cancelled due to wet weather etc.

MATCHES

Once the roster is complete you will be able to access via PlayHQ. Please make sure you check the roster on a regular basis as the roster can change due to regrading.

It is expected that each team provide a scorer for each game. Players are expected to provide a scorer on a roster basis.

Please make sure you advise your coach as soon as possible of any games that you will miss due to holidays, keep them informed of games you may miss through injury or illness.

Wet weather:

All cancellations are posted on the STNA Facebook page, and you will be notified by your coach. Don't assume your game will be cancelled as games may be moved inside and still go ahead.

If you have been asked to fill in for a higher team, please inform your coach before filling in. Fill ins are only allowed to play 6 games (in total) up in a higher division before you are deemed to be in that division. No one is allowed to play in a lower age group or division, or points will be lost. ALWAYS CHECK WITH YOUR COACH BEFORE FILLING IN.

PARTNERSHIP

Kilburn is excited to welcome our platinum partner Total Eyecare on board! Having served the Tasmanian community for over 70 years, they are the only 100% wholly Tasmanian, wholly optometrist-owned optometry group in Tasmania.

Kilburn Netball Club has enjoyed the support of Total Eyecare over the past three seasons and this has allowed us to provide a range of benefits to our players, such as events and team photos.

Kilburn is happy to again have the support of LivEat Moonah, The Albert Brewery and Red Square Cafe Glenorchy and Massage 949 as our game day partners in 2026.

If you or someone you know is interested in partnering with our club please contact us at kilburnnetballclub@gmail.com and we can provide you with more information.



total eyecare

See Better. See Us.



FUNDRAISING

We aim to make netball accessible to as many people as possible. In order to do this, we need to undertake fundraising activities throughout the year to keep our fees low.

Players are asked to participate in at least one of the fundraising ventures during the year.

Some of our recent fundraising has included quiz nights, chocolate boxes and volunteering at the Hobart marathon.

If you are interested in assisting with fundraising for our club please contact us at kilburnnetballclub@gmail.com



MEMBER WELLBEING OFFICERS

Our member wellbeing officers are here to help if any players, umpires, coaches or parents have any issues or grievances they wish to raise.

Our member wellbeing officers are available for any matters that a member of the club may not feel comfortable reporting to their coach or formally to the committee. They will then address the issue in line with our grievance procedures.

Our wellbeing officers are very friendly and are always happy for a chat when you see them around the courts!

If you would like to report a grievance/issue, please contact one of our member wellbeing officers:



Michelle Smith

- Committee member
- Umpire



Belinda Dooley

- Parent
- Player



Tania Kay

- Parent
- Player

CODE OF CONDUCT

JUNIOR PLAYERS

In addition to Netball Australia's General Code of Behaviour, you must meet the following requirements with regard to your conduct during any activity held by or under the auspices of Netball Australia, Member Organisations or Affiliates in your role as a player.

1. Participate because you enjoy it, not just to please parents and coaches.
2. Play by the rules
 - Know the rules.
3. Participate fairly and safely.
4. Abide by decisions, without argument or bad temper
 - Captains are able to approach an umpire during an interval or after the game for clarification of any rule, this must be done with a courteous manner
5. Co-operate with your coach, and other players.
 - Verbal abuse of officials or other players, deliberately fouling or provoking an opponent and throwing/damaging equipment is not acceptable or permitted
 - Treat all players as you would like to be treated
 - Ensure that at all times your behavior is fair
 - Be a patient and enthusiastic supporter of fellow players.
6. Applaud all good play, by your own team and opponents.
7. Do not engage in practices that affect sporting performance (alcohol, tobacco and drug use).
8. Respect and acknowledge the contribution of those who create the opportunity for you to play
 - Volunteers (scorers, coaches, managers, administrators and umpires)

To see all codes and policies please see our website.

CODE OF CONDUCT

SENIOR PLAYERS

In addition to Netball Australia's General Code of Behaviour, you must meet the following requirements with regard to your conduct during any activity held by or under the auspices of Netball Australia, Member Organisations or Affiliates in your role as a player.

1. Respect the rights, dignity and worth of fellow players, coaches, officials and spectators.
2. Refrain from conduct which could be regarded as sexual or other Harassment.
3. Respect the talent, potential and development of fellow players and competitors.
4. Care and respect the uniform and equipment provided to you.
5. Be frank and honest with your coach concerning illness and injury and your ability to train and play fully.
6. Conduct yourself in a responsible manner relating to language, temper and punctuality.
7. Maintain a high standard of personal behaviour at all times.
8. Abide by the rules and respect the decision of the umpires.
·Be courteous and use the correct process when seeking a rule clarification.
11. Do not engage in practices that affect sporting performance (alcohol, tobacco and drug use).

To see all codes and policies please see our website.

GRIEVANCE PROCEDURE

IS THE GRIEVANCE INFORMAL OR FORMAL?

<p>INFORMAL GRIEVANCE</p> <p>(grievance is not put in writing, there is no expectation of it being addressed in a formal manner)</p>	<p>FORMAL GRIEVANCE</p> <p>Does the grievance involve criminal activity?</p>	
<p>The grievance is directed to a member wellbeing officer, who determines if further action is required.</p>	<p>NO</p> <p>Committee to direct grievance to the member wellbeing officer on the committee, as per policy</p>	<p>YES</p> <p>Committee to assess and engage with authorities</p>
	<p>Member wellbeing officer to ratify recommended action with Committee</p>	<p>Police determine if investigation is necessary</p>
	<p>Written confirmation of resolution is sent to complainant & recorded in committee central files</p>	<p>Club cooperates with any investigation required, and records action taken, and records in committee central files</p>

You can read the full grievance procedure on our website.

2026 SEASON DATES

Round	Wednesday	Thursday	Saturday
Round 1	18 March	19 March	21 March
Easter	1 April	2 April	30th March
Anzac Day	22 April	23 April	25 April
Kings's Birthday	5th June	6th June	8th June
School holidays	15th July	16th July	18th July
Round 18	12 August	13 August	15 August
Break week	19 August	20 August	22 August
Semi finals	26 August	27 August	29-30 August
Preliminary finals	2 September	3 September	5-6 September
Grand finals	9 September	10 September	12-13 September

2026 SENIOR COACHES

Coach	Team
Premier League	James Adams
1st Grade Royal	James Adams
1st Grade Sky	Kristy Scott
2nd Grade	Rick Loring
3rd Grade Royal	Amanda Robertson
3rd Grade Sky	Marike Barnard
3rd Grade Red	Jarree Shelverton
4th Grade	Alice Webb and Bec Nichold
5th Grade Royal	Rani Milne and James Adams
5th Grade Sky	Leah Rogers
5th Grade White	Sandy Hniat
6th Grade Royal	Alison Donoghue and Mel Loring
6th Grade Sky	Kellie Williams

Coach	Team
7th Grade	Amanda & Hannah Robertson
Mens Royal	Gretel Roberts
Mens Sky	Lydia Coote
21 Div 2	Emily Burn
21 Div 3 Royal	Amanda Robertson
21 Div 3 Sky	Laura Winch



2026 JUNIOR COACHES

Coach	Team	Coach	Team
17 Div 1	Kristy Scott and Laura Winch	13 Div 2	Mel Loring and Isaac Grundy
17 Div 2	Rani Milne	13 Div 3	Molly Neale
17 Div 3 Royal	Jill Abbott	13 Div 4	Cara Berry
17 Div 3 Sky	Kellie Williams	13 Div 5 Royal	Claire Stark, Lily Knight and Sandy Hniat
17 Div 3 Whie	Jess Cooper and Steph Cooper	13 Div 5 Sky	Amanda Gillie and Grace Dillon
17 Div 4	Casey Eyers and Shaylah Eyers	11 Div 2	Gretel Roberts and Ava Burgess
15 Div 1	Amanda Robertson	11 Div 3	Abbey Page
15 Div 2 Royal	Jarree Shelverton	11 Div 4	Zoe Leung, Dotty French and Rani Milne
15 Div 2 Sky	Lynda Mallinson and Deedee Mallinson	Under 9s	Bella Scott
15 Div 3 Royal	Jasmine Wallance		
15 Div 3 Sky	Sandy Hniat		
15 Div 4	Elisha Blacklow		
15 Div 5	Sarah Wright		

**STAY UP TO DATE WITH THE
LATEST NEWS AND UPDATES!**



Website

www.kilburnnetball.org.au



Facebook

<https://www.facebook.com/kilburnnetballclub>



Instagram

[@kilburnnetballclub](https://www.instagram.com/kilburnnetballclub)



Email:

kilburnnetballclub@gmail.com